

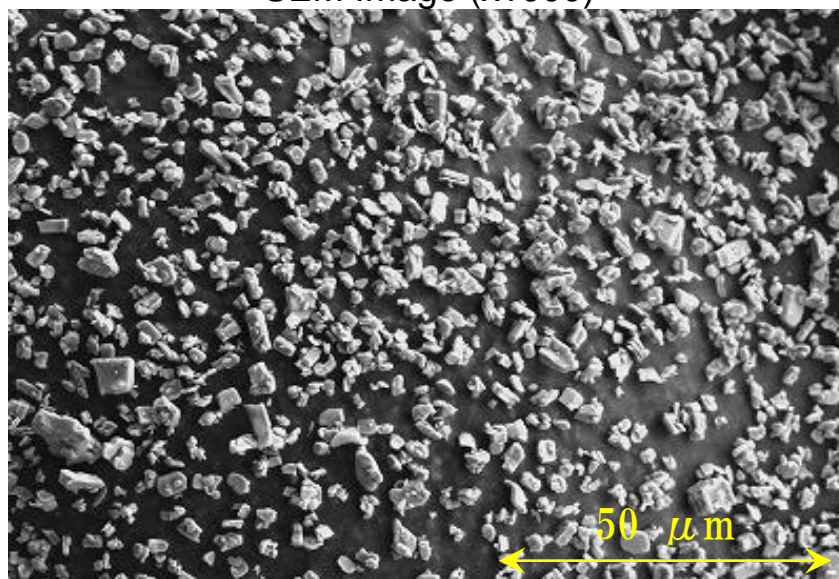
TERRACESS L-SS

Date of issue: May, 2018

Otsuka's New Titanate Material

Otsuka Chemical has been a leader in the development of unique titanate materials. We are now offering new materials by making the most of our technology through the redevelopment of our current materials. We are attracting worldwide attention as a manufacturer of environmentally-friendly materials for the future.

SEM Image (x1000)



Chemical and Powder Properties

Appearance	White Powder
Chemical Name	Lithium Potassium Titanium Oxide
Median Size (μm)	0.5 – 3.5
pH	9.5 – 11.5
Specific Surface Area (m ² /g)	1.5 – 3.5
Aerated Bulk Density (g/cm ³)	0.2 – 0.6
True Density (g/cm ³)	3.4
Melting Point (°C)	1150 – 1200
Weight Loss on Drying (wt%)	≤ 0.7
Hardness (Moh's scale)	ca.4

Note: The above table is an approximate reference.

